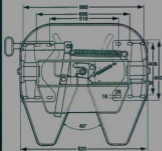


TMC®

2" FIFTH WHEEL COUPLER



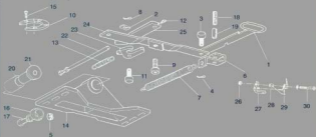
DIN / ISO Mounting Brackets

- REPLACEABLE HORSE-SHOE RING
- POSITIVE ACTION-NO HALF COUPLING
- SECURE AUTOMATIC LOCKING
- HEAVY DUTY RUBBER BUSHES
- WEAR ADJUSTMENT BY EXTERNAL SCREW
- NO KING-PIN SEIZURES
- LOW MAINTENANCE
- ONE SINGLE GREASE POINT

PERFORMANCE

- | | |
|-----------------|----------|
| • VERTICAL LOAD | 25,000kg |
| • G.C.W. | 65,000kg |
| • D-VALUE | 152kN |
| • WEIGHT | ~ 120kg |

PARTS LIST



| | | | | | |
|----|-------|--------------------|----|-------|-------------------|
| 1 | T2875 | Handle Assy | 16 | T2878 | Collar |
| 2 | T2886 | Washer | 17 | T2879 | Set Screw |
| 3 | T2874 | Handle Pin | 18 | T2880 | Spring-Handle |
| 4 | T2873 | Split Pin | 19 | T2888 | Sleeve-Handle |
| 5 | T2877 | Nut Castle | 20 | T2887 | Bush |
| 6 | T2872 | Connector-Handle | 21 | T2876 | Bearing Bolt |
| 7 | T2862 | Main Spring | 22 | T2880 | Adjuster Rod Assy |
| 8 | T2865 | Split Pin | 23 | T2888 | Hook |
| 9 | T2883 | Bob-Plunger | 24 | T2886 | Operating Lever |
| 10 | T2869 | Homeshoe Ring | 25 | T2884 | Plunger |
| 11 | T2887 | Hook Pin | 26 | T2865 | Nut |
| 12 | T2871 | Grease Nipple | 27 | T2864 | Latch Lever |
| 13 | T2881 | Hook Spring | 28 | T2863 | Collar |
| 14 | T2870 | Foot-173 mm Height | 29 | T2862 | Spring |
| 15 | T2890 | Set Screw | 30 | T2861 | Bolt |

REPAIR KITS



• Coupling Kit : Part No. TK2800



• Bearing Kit : Part No. TK2801

Due to our policy of continuous R&D, we reserve the right to amend specifications without notice or obligation.

Truckmaster (M) Sdn. Bhd.

No 78 & 88 Jalan S/108, Spring Crest Industrial Park, 68108 Batu Caves, Kuala Lumpur, Malaysia. Ph 03 6187 7788 Fax 03 6187 6722 Email trmas@tm.net.my

TMC Axle Manufacturing Sdn. Bhd.

No 78 & 88 Jalan S/108, Spring Crest Industrial Park, 68108 Batu Caves, Kuala Lumpur, Malaysia. Ph 03 6187 7788 Fax 03 6187 6722 Email trmas@tm.net.my